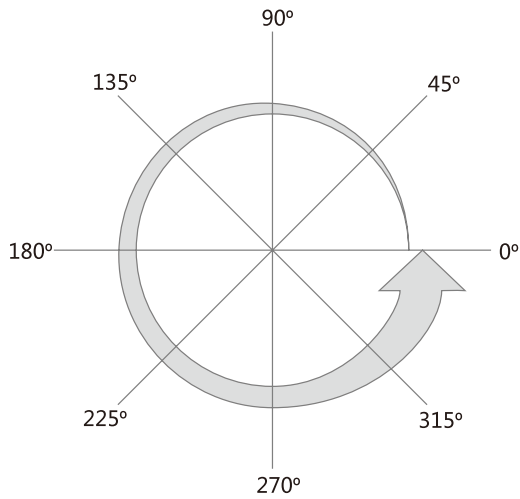
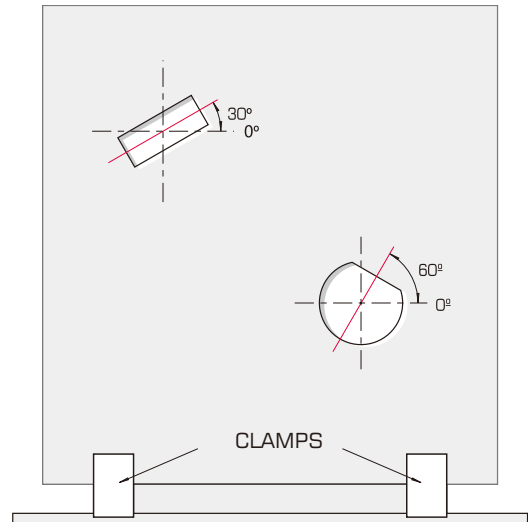


SALVAGNINI STYLE TOOLING



SHAPE ANGLE DIRECTION



SHAPE POSITION AT SHEET METAL FROM TOP OF MACHINE

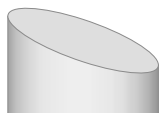
SHAPE ANGLE AT 0°



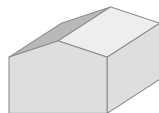
SHAPE ANGLE AT 90°



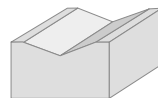
PUNCH TIP TYPE



Whisper



Rooftop



Inverted Rooftop



4 way concave



2 way concave

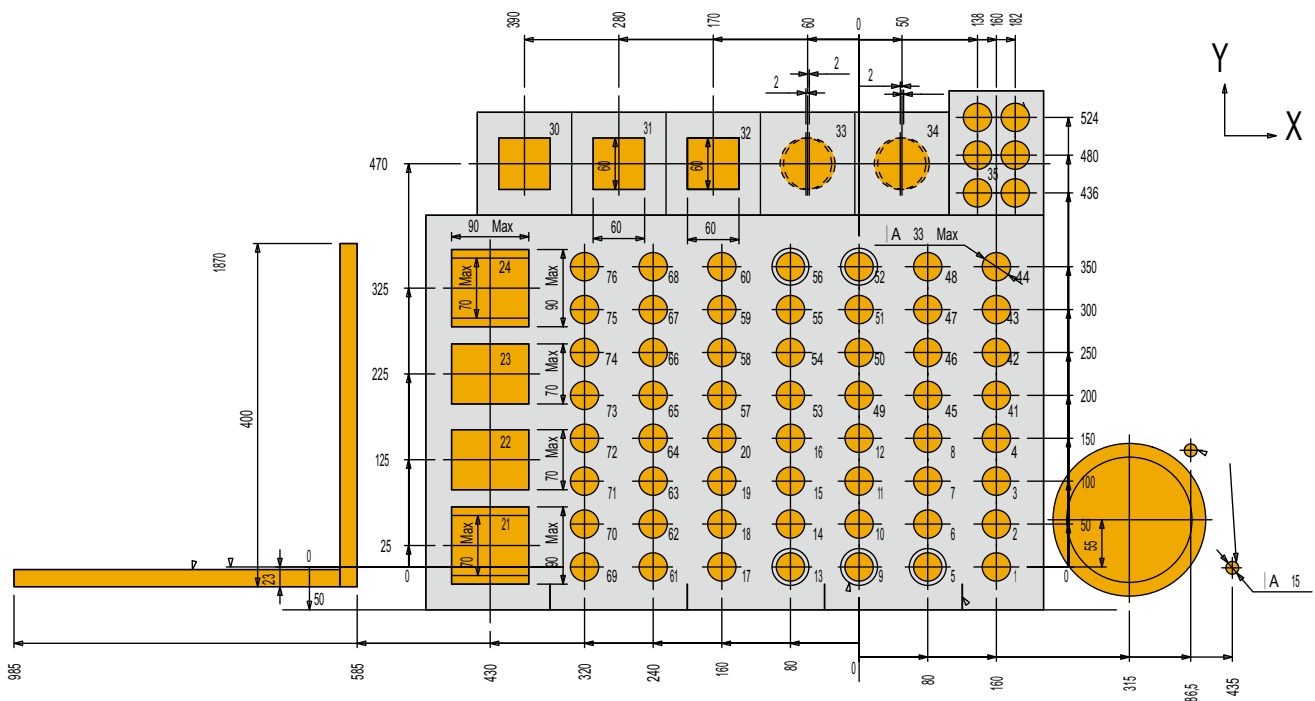


Cup concave

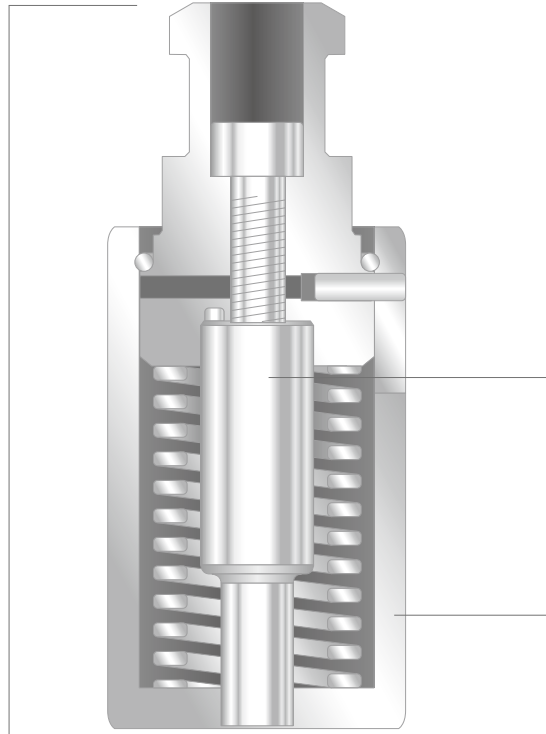
TECHNICAL INFORMATION

POSITION	TYPE	STATION	MAX SIZE	REMARK
1-20,41-76 7 tons	P0	33mm	10mm	Fully Guided
	P3	33mm	26mm	90° Rotation
30-35 12tons	P5	60mm	42.5mm	Continous Ro.
	S6	60mm	60mm	180° Rotation
1-20,41-76 7 tons	P9	33mm	26.5mm	Fully Guided
	S4	33mm	33mm	90° Rotation
21-24 26tons	S8	70x90	70x90mm	Type70

H3 HEAD LAYOUT



Punch Ass'y
 Round: SPO-PARO
 Shape: SPO-PA**



Punch Body
 Round: SPO-PBRO
 Shape: SPO-PB**

Blank Holder
 Round: SPO-GURO
 Shape: SPO-GU**



Die
 Round: SPO-DIRO
 Shape: SPO-DI**

H3 HEAD

	30	31	32	33	34	35	
24 90 x 90	76	68	60	56	52	48	44
	75	67	59	55	51	47	43
23 70 x 90	74	66	58	54	50	46	42
	73	65	57	53	49	45	41
22 70 x 90	72	64	20	16	12	8	4
	71	63	19	15	11	7	3
21 90 x 90	70	62	18	14	10	6	2
	69	61	17	13	9	5	1

HEAD POSITIONS

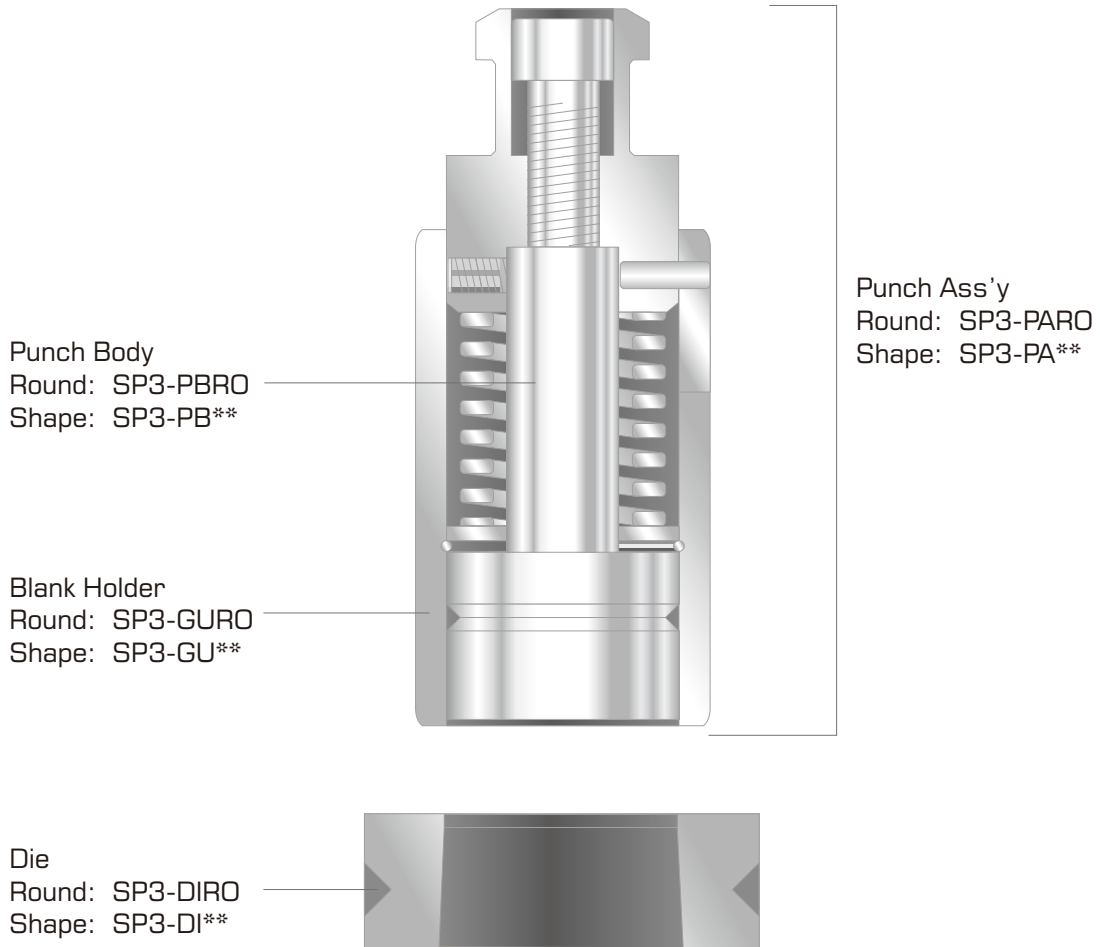
1-20, 41-76 7 TON

*Max size: 10mm, Max tonnage: 70KN

*Material thickness to punch: 0.5mm--3.5mm

*Punch Length: 42mm, Die Length: 15mm

*Punch Grinding life: 1.5mm, Die Grinding life: 1.2mm


H3 HEAD

	30	31	32	33	34	35
24 90 x 90	76	68	60	56	52	48
	75	67	59	55	51	47
23 70 x 90	74	66	58	54	50	46
	73	65	57	53	49	45
22 70 x 90	72	64	20	16	12	8
	71	63	19	15	11	7
21 90 x 90	70	62	18	14	10	6
	69	61	17	13	9	5

HEAD POSITIONS

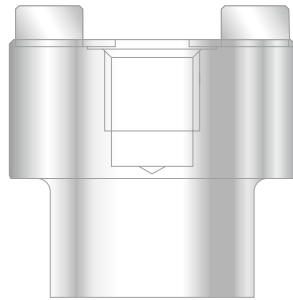
1-20, 41-76 7 TON

*Max size:26mm, Max tonnage: 70KN

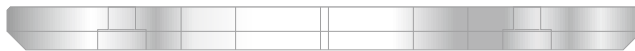
*Material thickness to punch: 0.5mm--3mm

*Punch Length: 52.7mm, Die Length:15mm

*Punch Grinding life: 1.5mm, Die Grinding life:1.2mm



Punch Body
 Round: SP5-PBRO
 Shape: SP5-PB**



Stripper
 Round: SP5-GURO
 Shape: SP5-GU**



Die
 Round: SP5-DIRO
 Shape: SP5-DI**

H3 HEAD

	30	31	32	33	34	35
24 90 x 90	76	68	60	56	52	48
	75	67	59	55	51	47
23 70 x 90	74	66	58	54	50	46
	73	65	57	53	49	45
22 70 x 90	72	64	20	16	12	8
	71	63	19	15	11	7
21 90 x 90	70	62	18	14	10	6
	69	61	17	13	9	5

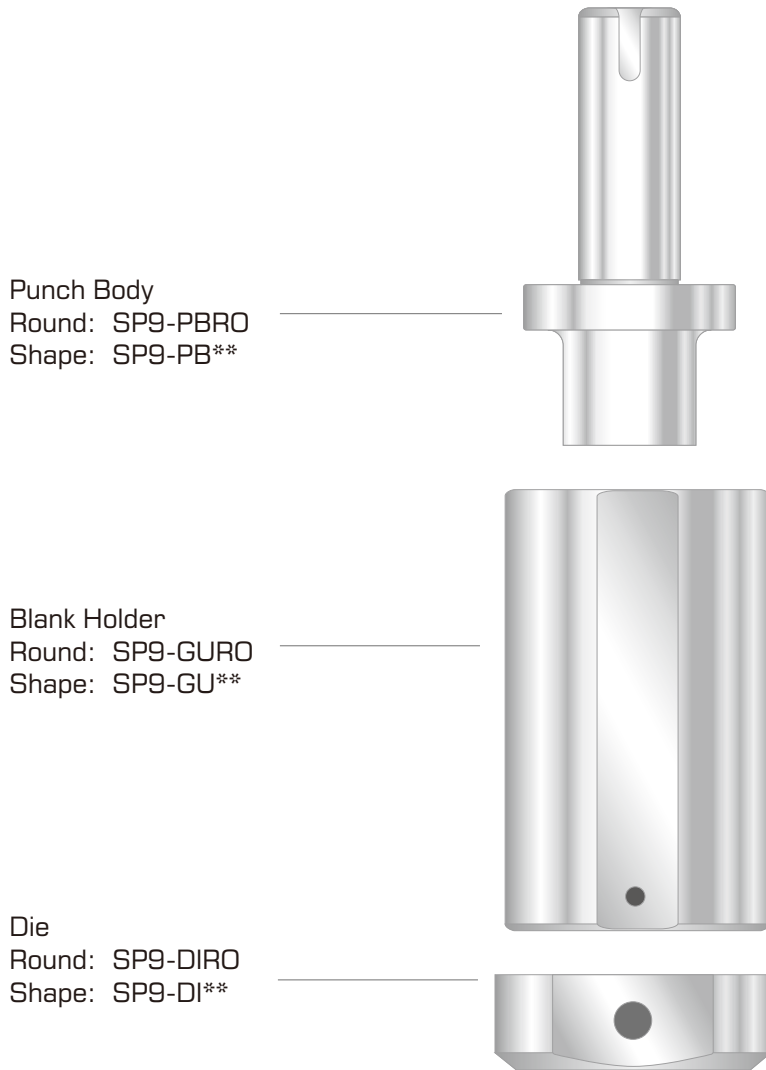
HEAD POSITIONS
 30-35 12 TON

*Max size:42.4mm, Max tonnage: 12KN

*Material thickness to punch: 0.5--3mm

*Punch Length: 43mm, Die Length: 18mm

*Punch Grinding life: 1.5mm, Die Grinding life:1.2mm


H3 HEAD

	30	31	32	33	34	35	
24 90 x 90	76	68	60	56	52	48	44
	75	67	59	55	51	47	43
23 70 x 90	74	66	58	54	50	46	42
	73	65	57	53	49	45	41
22 70 x 90	72	64	20	16	12	8	4
	71	63	19	15	11	7	3
21 90 x 90	70	62	18	14	10	6	2
	69	61	17	13	9	5	1

HEAD POSITIONS

1-20, 41-76 7 TON

*Max size:26.5mm, Max tonnage: 70KN

*Material thickness to punch: 0.5--3mm

*Punch Length: 52.7mm, Die Length:15mm

*Punch Grinding life: 1.5mm, Die Grinding life:1.2mm



Punch Body
 Round: SS4-PBRO
 Shape: SS4-PB**



Stripper
 Round: SS4-GURO
 Shape: SS4-GU**



Die
 Round: SS4-DIRO
 Shape: SS4-DI**

H3 HEAD

	30	31	32	33	34	35
24 90 x 90	76	68	60	56	52	48
	75	67	59	55	51	47
23 70 x 90	74	66	58	54	50	46
	73	65	57	53	49	45
22 70 x 90	72	64	20	16	12	8
	71	63	19	15	11	7
21 90 x 90	70	62	18	14	10	6
	69	61	17	13	9	5

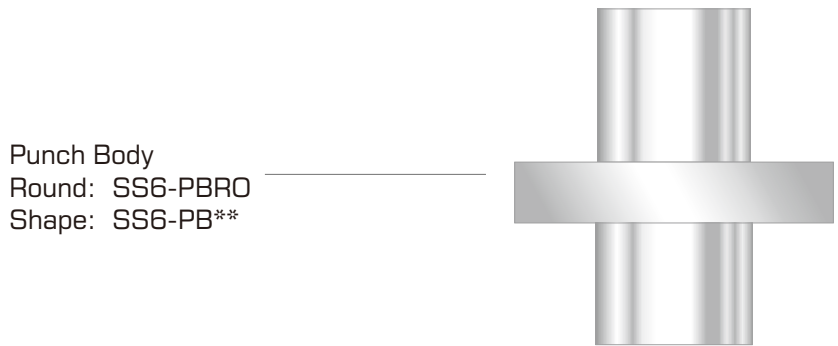
HEAD POSITIONS
 1-20,41-76, 7 TON

*Max size:33mm, Max tonnage: 70KN

*Material thickness to punch: 0.5--3.5mm

*Punch Length: 81.5mm, Die Length: 15mm

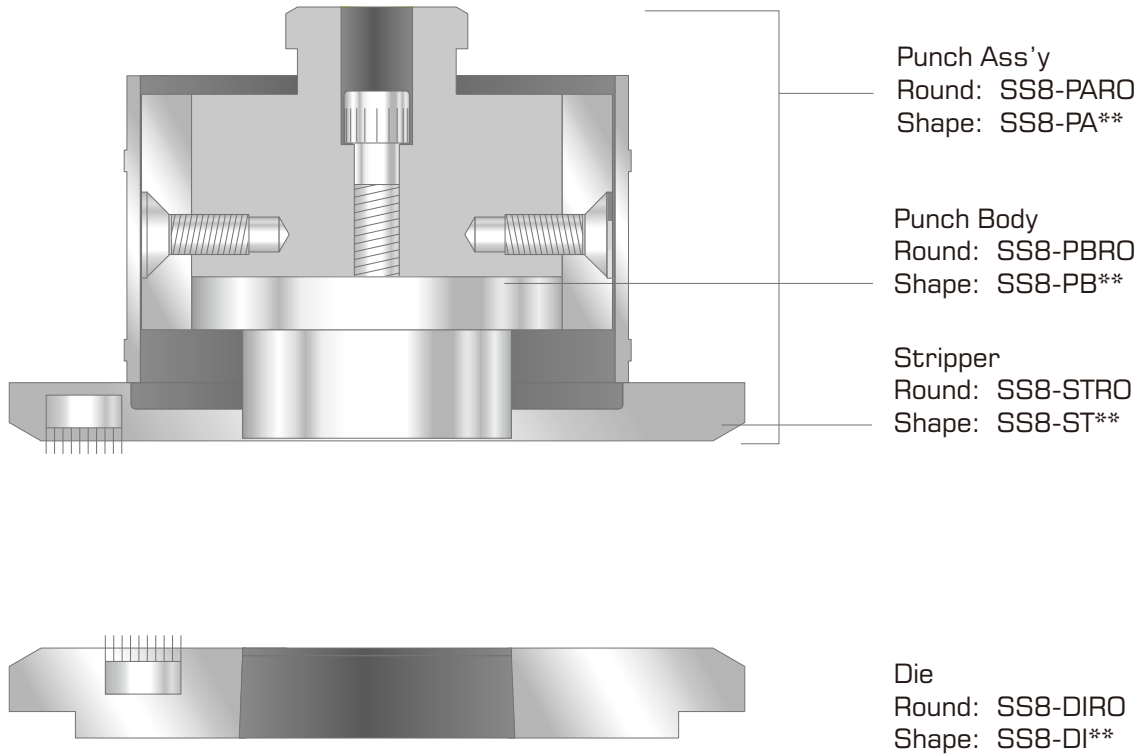
*Punch Grinding life: 2mm, Die Grinding life: 1.2mm


H3 HEAD

	30	31	32	33	34	35
24 90 x 90	76	68	60	56	52	48
	75	67	59	55	51	47
23 70 x 90	74	66	58	54	50	46
	73	65	57	53	49	45
22 70 x 90	72	64	20	16	12	8
	71	63	19	15	11	7
21 90 x 90	70	62	18	14	10	6
	69	61	17	13	9	5

HEAD POSITIONS
30-35 12 TON

- *Max size:60mm, Max tonnage: 120KN
- *Material thickness to punch: 0.5--3.5mm
- *Punch Length: 44mm, Die Length:15mm
- *Punch Grinding life: 2mm, Die Grinding life:1.2mm


70 Type

	30	31	32	33	34	35	
24 70 x 90	76	68	60	56	52	48	44
	75	67	59	55	51	47	43
23 70 x 90	74	66	58	54	50	46	42
	73	65	57	53	49	45	41
22 70 x 90	72	64	20	16	12	8	4
	71	63	19	15	11	7	3
21 70 x 90	70	62	18	14	10	6	2
	69	61	17	13	9	5	1

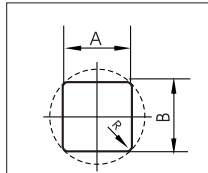
HEAD POSITIONS
21-24, 26 TON

*Max size: 70X90mm, Max tonnage: 260KN

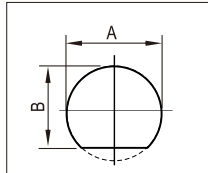
*Material thickness to punch: 0.5--3.5mm

*Punch Length: 30mm, Die Length: 17mm

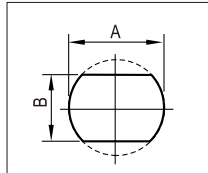
*Punch Grinding life: 2mm, Die Grinding life: 1.2mm



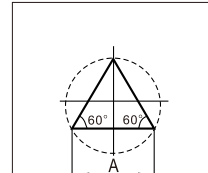
Code: QR
Name: Quad R



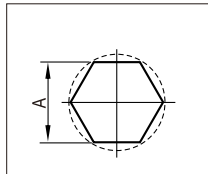
Code: SD
Name: Single D



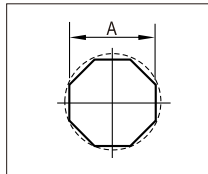
Code: DD
Name: Double D



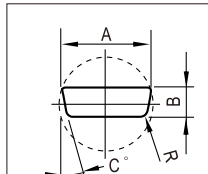
Code: ET
Name: Equi.triangle



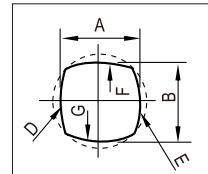
Code: HX
Name: Hexagon



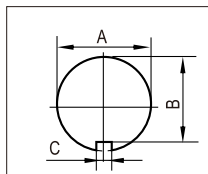
Code: OT
Name: Octagon



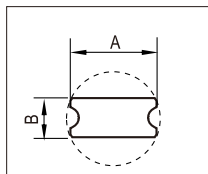
Code: A4
Name: Cable connector



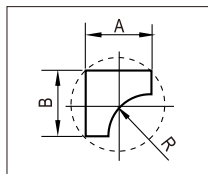
Code: B2
Name: Quad-R



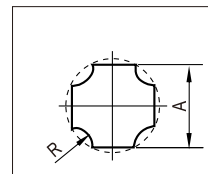
Code: C0
Name: Keyway



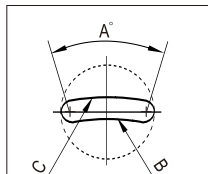
Code: C7
Name: Micro-joint



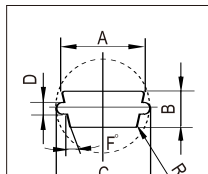
Code: D1
Name: One way radius



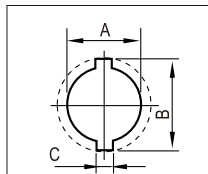
Code: D2
Name: Four way radius



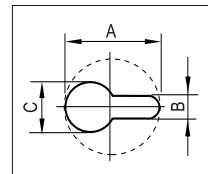
Code: E2
Name: Banana



Code: E4
Name: Connector



Code: E7
Name: Keyhole



Code: F3
Name: Keyhole

PUNCH DIE GRINDER

Punch die grinder specification.



Grinding accuracy: $\pm 0.005\text{mm}$	Tool setting mode: Automatic
Grinding mode: Automatic	Grinding type: Rough, Precision, Polishing
Wheel: Boronizing wheel	Grinding area: 150mm
3-jaw chuck fixture Dia. 1-180mm	Max. feed speed: 900mm/min (adjustable)
PLC controller: Mitsubishi	Screen: Touch screen Interface
Spindle motor: 2.2KW, 3600R/PM	Motor for rotating table: 0.375KW, 1800R/PM
Motor for cooling : 0.125KW, 1800R/PM	Electrical: AC380/400V (50/60 HZ)
Size: 600x700x1650mm	Weight: 600KG